

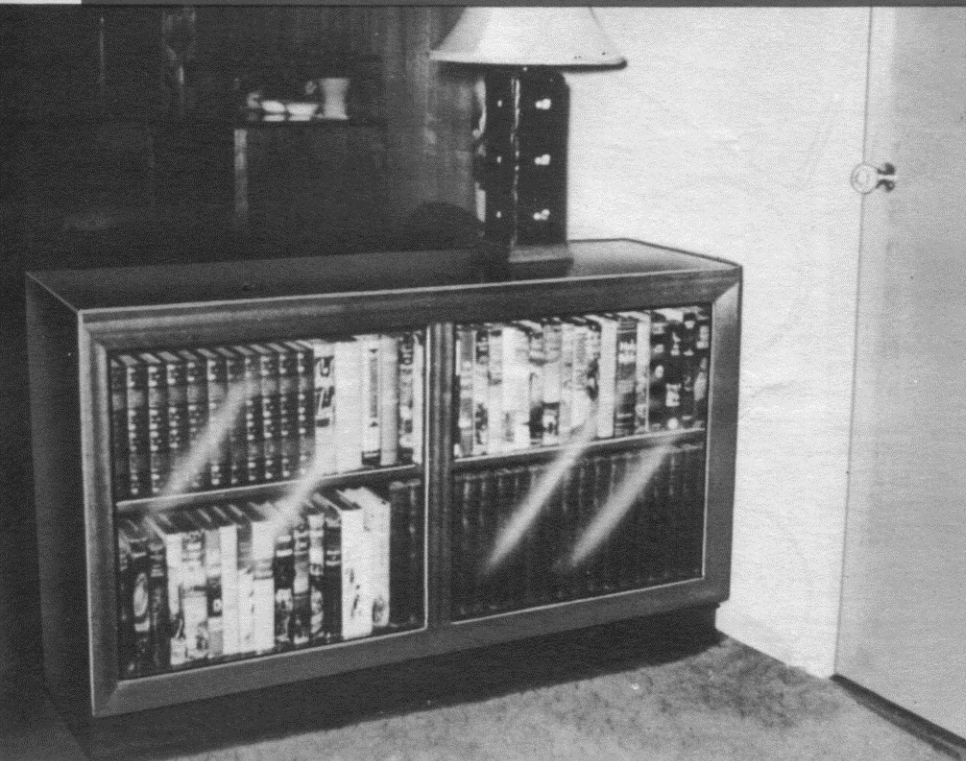
*Here is a set of
Project Plans
from*



Copyright © 2004

All Rights Reserved

Double Sided Bookcase



(Photo No. 1)

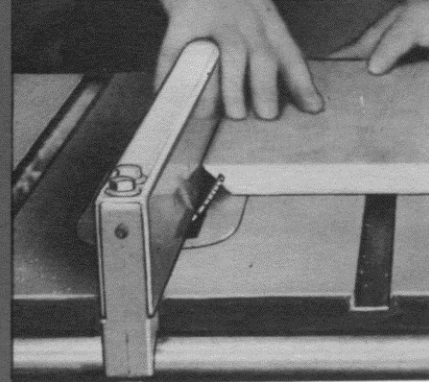
This practical case could serve several purposes in the home. It makes an ideal room divider as shown in the above photo. It could also be used in the boy's or girls' room where two children must do their studying. Each would have their own private shelf space.

The entire case can be made of $\frac{3}{4}$ inch plywood except for the framing trim and center supports which are made of solid stock. For a neat job, the sides and tops are mitered and held together with $\frac{1}{4}$ x $\frac{3}{4}$ inch splines, (see detail Fig. 3). The front base boards are rabbet cut to fit against the sides (Fig. 6). Making the joint in this manner leaves only a $\frac{1}{16}$ inch exposed edge. The shelf can be assembled permanently to the sides by fitting into a dado groove, (Fig. 1), or made adjustable by means of a series of holes bored into the sides to

take conventional shelf supports, (Fig. 2).

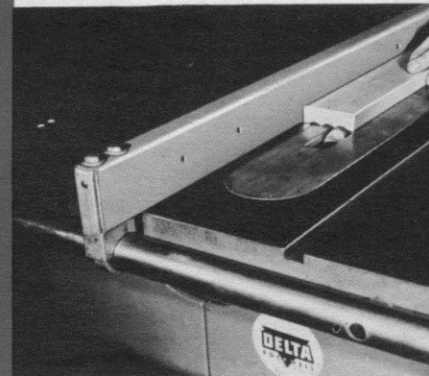
Front trim on both fronts of the cabinet is made of $1 \times 1\frac{3}{4}$ inch stock. The front face is moulded on the spindle shaper with the D-214 cutter as shown in Fig. 5 and Photo #4. Center trim is made of $\frac{3}{4} \times 2\frac{1}{2}$ inch material with the face moulded by making three passes over the 35-211 cutters on the circular saw, (Fig. #4 and Photo #3). The ends are fitted into the front trim with a $\frac{5}{16} \times \frac{1}{2}$ inch long tenon, (see drawing Fig. 5).

Sand project thoroughly making sure to break all sharp corners. Stain to match present wood trim in room. Apply two thin coats of white shellac followed with a coat of rubbed effect varnish. For easier moving of case, use $\frac{3}{4}$ inch furniture glides.



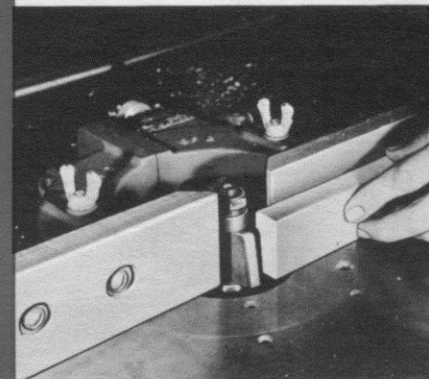
(Photo No. 2)

Spline grooves in the top and side pieces are made by tilting the saw table or arbor 45° and using the two outside blades of the 34-333 dado head set.



(Photo No. 3)

With cutters #35-211 in the #265 moulding cutter head mounted on the circular saw arbor, the center supports are moulded by making three passes over the knives.



(Photo No. 4)

Framing trim is moulded on the spindle shaper using the D-214 panel raising knife with stock fed along the shaper fence.

FRAMING TRIM

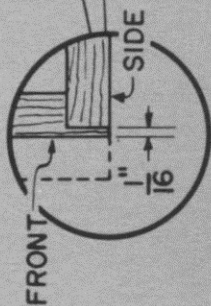
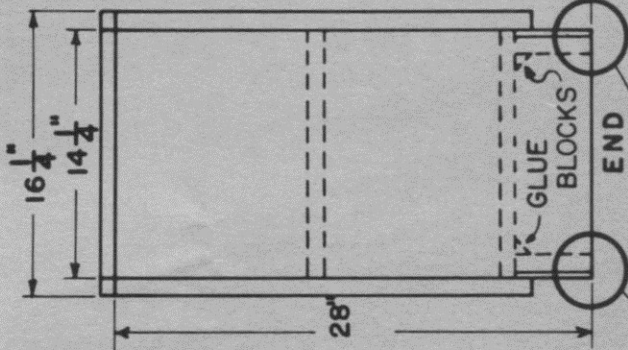
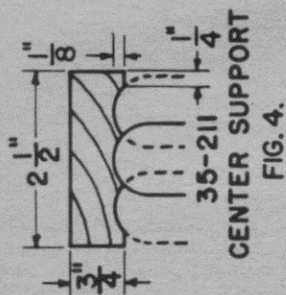
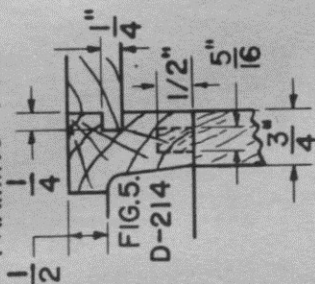
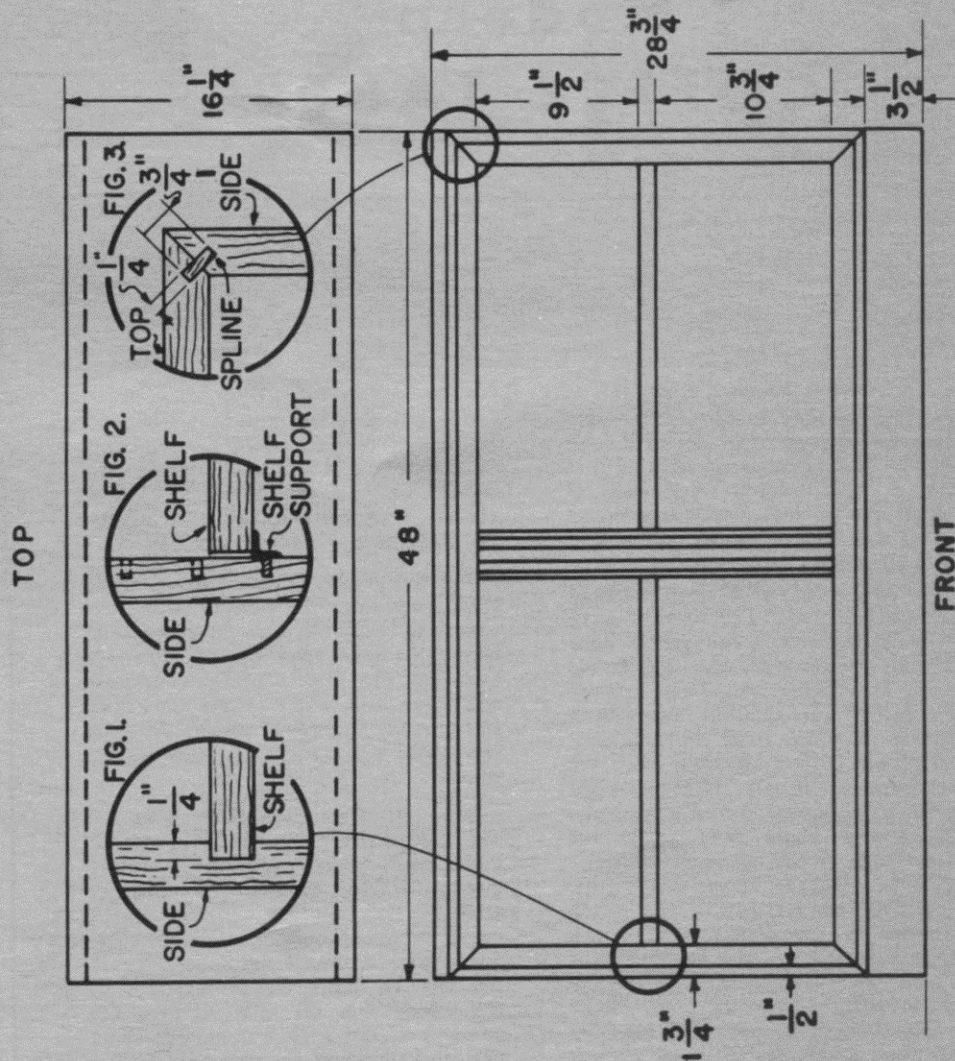


FIG. 6.



Bill of Materials

No. of Pieces	Name	Size
2	Sides	3/4 x 14 3/4 x 28 3/4
1	Top	3/4 x 14 3/4 x 48
2	Splines	1/4 x 14 1/4 x 3/4
2	Base Boards (Fronts)	3/4 x 4 1/2 x 48
1	Base Boards	3/4 x 14 3/4 x 47
1	Shelf	3/4 x 14 1/4 x 47
4	Framing Trim (Sides)	1 x 1 3/4 x 25 1/4
4	Framing Trim (Top & Bottom)	1 x 1 3/4 x 48
2	Center Support	3/4 x 2 1/2 x 21 1/4
4	Furniture Glides	3/4" Dia.